

**GLOUCESTERSHIRE
PRIMARY CARE CLINICAL AUDIT GROUP**

**An audit on
the management in primary care
of people with schizophrenia
in Gloucestershire**

2000 - 2001

Results

Section B

Inter-practice performance

GLOUCESTERSHIRE PRIMARY CARE CLINICAL AUDIT GROUP

County wide audit on the management in primary care of people with schizophrenia 2000 - 2001

Section B: Inter-practice performance

The Figures on the following pages enable practices to compare their performance with that of others. Each practice is identified by their confidential PCCAG code number.

There are thirty-nine practices with less than ten patients with schizophrenia. They have not been included in any of the Figures comparing inter-practice performance in this section; meaningful comparison is impossible with small numbers.

Practices which have larger numbers of patients with schizophrenia do not appear on every graph. They are omitted from histograms where, in the criterion under consideration, the number of patients was below ten.

We have not been able to include a graph of inter-practice performance for every criterion in the audit. For some criteria there were too few practices with sufficient numbers of patients.

In interpreting this data, it will be worth bearing in mind that:-

- practice populations vary quite significantly across the county.
- practices may have experienced problems in identifying patients for inclusion in the audit.

Patients not currently taking medication are the group most likely to have been omitted. Where such omissions occurred the results may be unrepresentative of all patients with schizophrenia.

- due to the small numbers of patients included it is particularly important not to attach too much weight to small differences in the percentages reported.

The following tables summarise the county means and list the highest and lowest values from individual practices.

Prevalence			
Patients included in the audit	County audit mean	Inter-practice range	Refer to:-
Number of patients aged 18 – 65 years identified by the practice as having schizophrenia	14	1 - 53	Fig. GP1
Prevalence of schizophrenia in those aged 18 – 65 years			
	County audit mean	Inter-practice range	Refer to:-
Prevalence of schizophrenia in those aged 18 – 65 years	0.34%	0.04% - 2.36%	Fig. GP2
Learning difficulties			
	County audit mean	Inter-practice range	Refer to:-
Patients with learning disabilities as a percentage of patients with schizophrenia	22%	0% - 80%	Fig. GP3
Clinical review			
Patients with a record of the following in last 15 months, as a percentage of all patients with schizophrenia:	County audit mean	Inter-practice range	Refer to:-
GP consultation	86%	74% - 100%	Fig. GP4
Contact with the mental health services	78%	48% - 100%	Fig. GP5
Blood pressure			
	County audit mean	Inter-practice range	Refer to:-
Patients who, as a percentage of all patients with schizophrenia have had their blood pressure measured in the previous five years	67%	20% - 93%	Fig. GP6

Smoking			
	County audit mean	Inter-practice range	Refer to:-
Patients, as a percentage of all patients with schizophrenia, with smoking status recorded in the previous five years	65%	9% - 100%	Fig. GP8
Smokers, as a percentage of those with smoking status recorded	59%	9% - 82%	Fig. GP9
Alcohol consumption			
	County audit mean	Inter-practice range	Refer to:-
Patients, as a percentage of all patients with schizophrenia, with alcohol consumption recorded in the previous five years	56%	0% - 91%	Fig. GP10
Body mass index			
Patients who, as a percentage of all patients with schizophrenia:	County audit mean	Inter-practice range	Refer to:-
Have had their BMI recorded in the previous five years	52%	4% - 86%	Fig. GP11
Had a BMI of <20 and >25, as a percentage of those with BMI measured	64%	46% - 91%	Fig. GP12
Assessment of mental state, social and/or environmental factors			
Patients who, as a percentage of all patients with schizophrenia:	County audit mean	Inter-practice range	Refer to:-
Have had an assessment of mental state in the previous 15 months	87%	48% - 100%	Fig. GP13
Have had an assessment of social and/or environmental factors in the previous 15 months	82%	0% - 100%	Fig. GP14

Antipsychotic medication

Patients who, as a percentage of all patients with schizophrenia:	County audit mean	Inter-practice range	Refer to:-
Are on antipsychotic medication	87%	55% - 100%	Fig. GP15
Are taking a novel antipsychotic	44%	17% - 73%	Fig. GP16
Are taking more than one antipsychotic drug	19%	0% - 56%	Fig. GP17

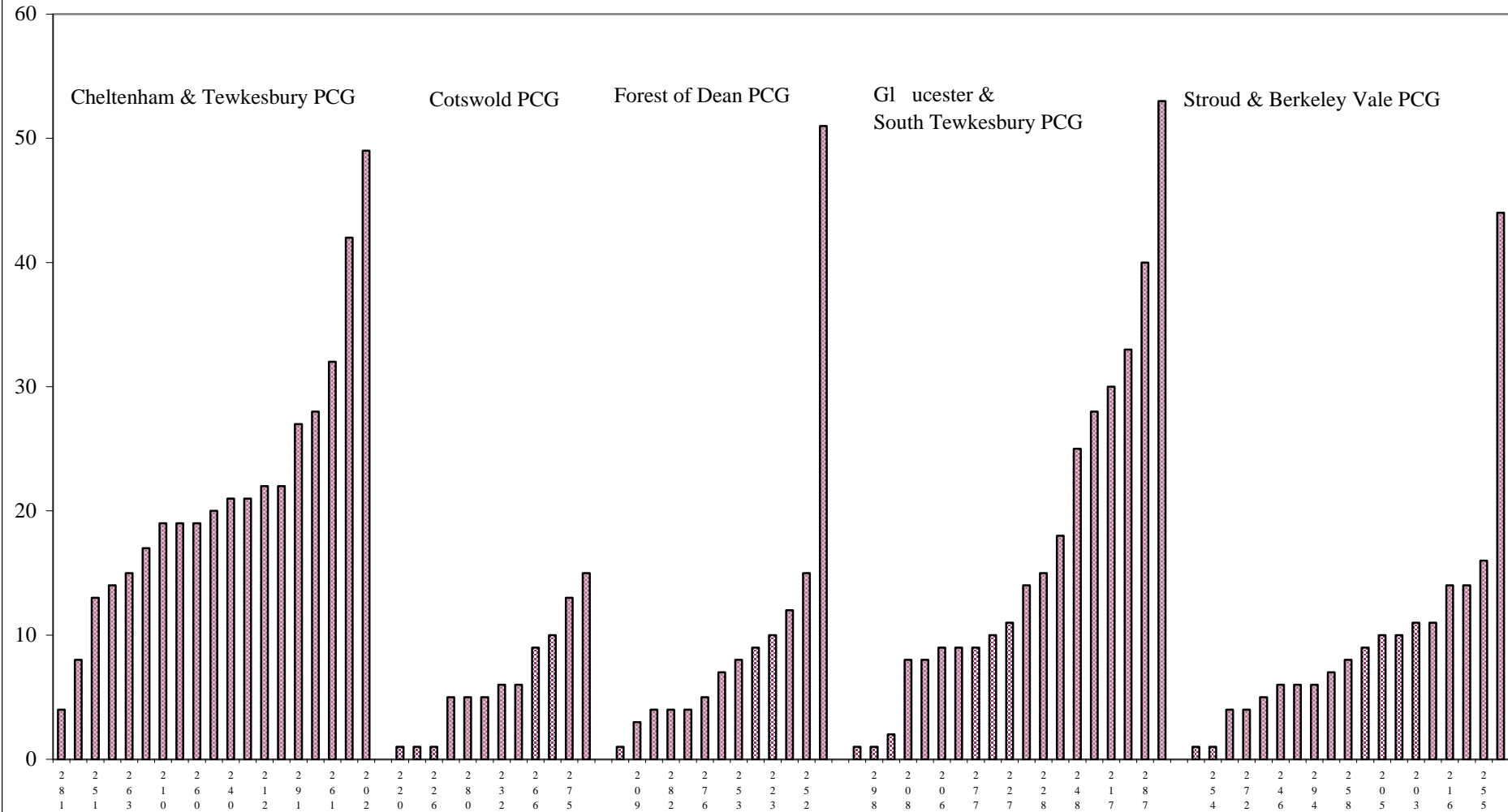
Side-effects associated with antipsychotic medication

Patients who, as a percentage of patients on medication:	County audit mean	Inter-practice range	Refer to:-
Have had an assessment of side-effects in the last 15 months	75%	17% - 100%	Fig. GP18
Have side-effects present, as a percentage of those with side-effects assessed	27%	7% - 67%	Fig. GP19

Involvement in care

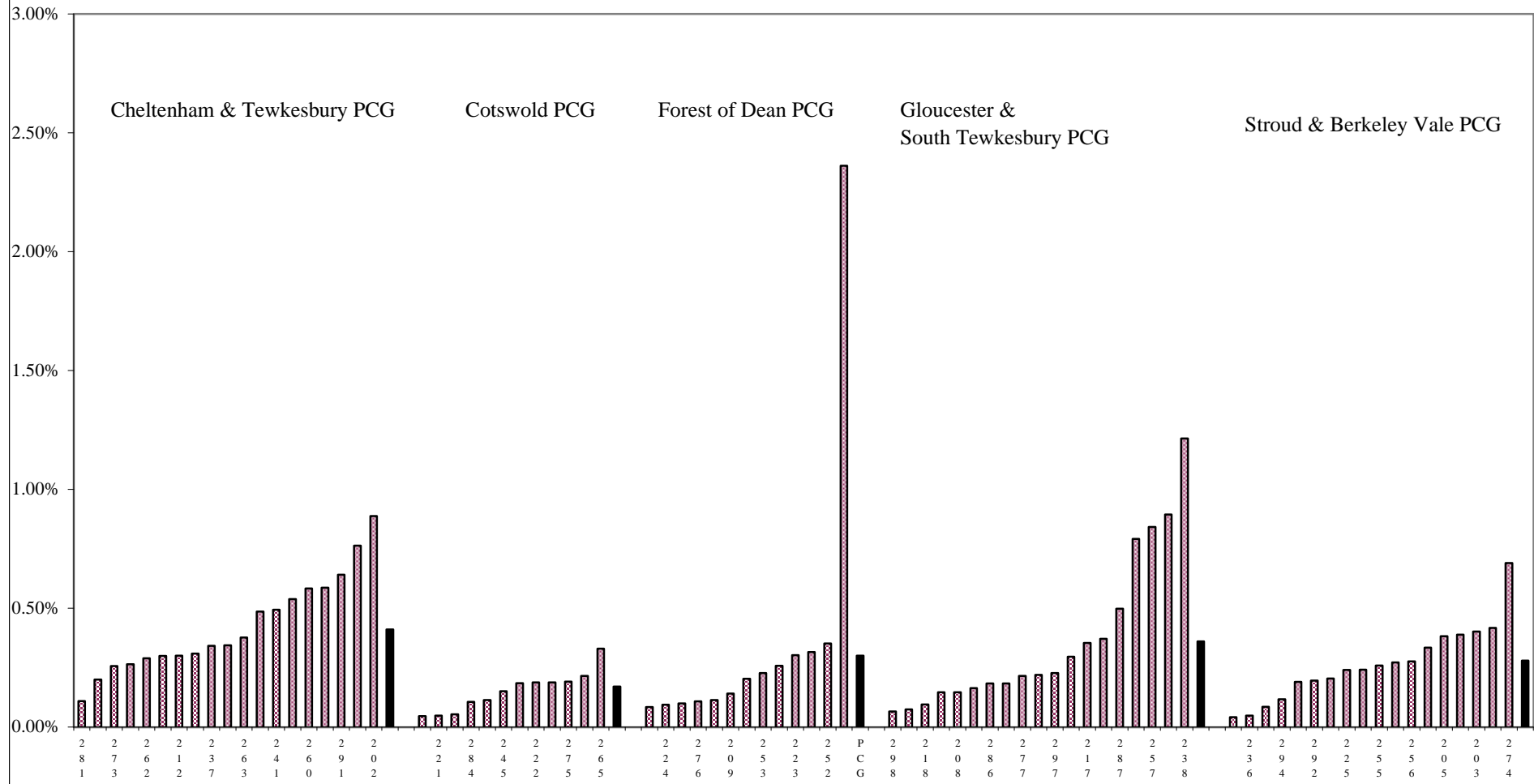
Patients in whom, as a percentage of all patients with schizophrenia:	County audit mean	Inter-practice range	Refer to:-
The practice did not feel sufficiently involved	24%	0% - 71%	Fig. GP20

Figure GP1 : Number of patients with schizophrenia included in audit



County figure = 0.34% based on data from 81 practices

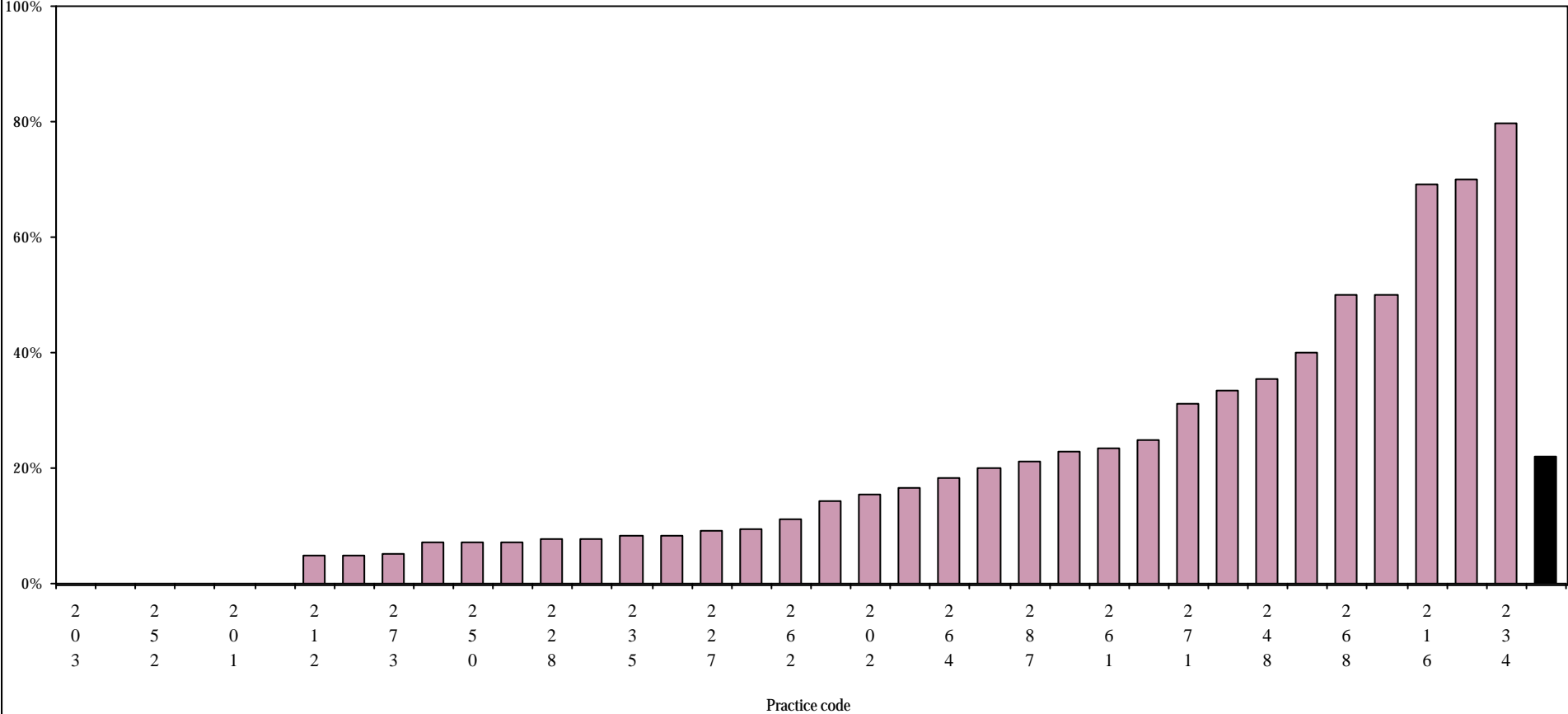
Figure GP2 : Prevalence of schizophrenia in those aged 18 - 65 years



Practice 258 was unable to supply accurate data on their practice list

County mean = 22%
n = 945

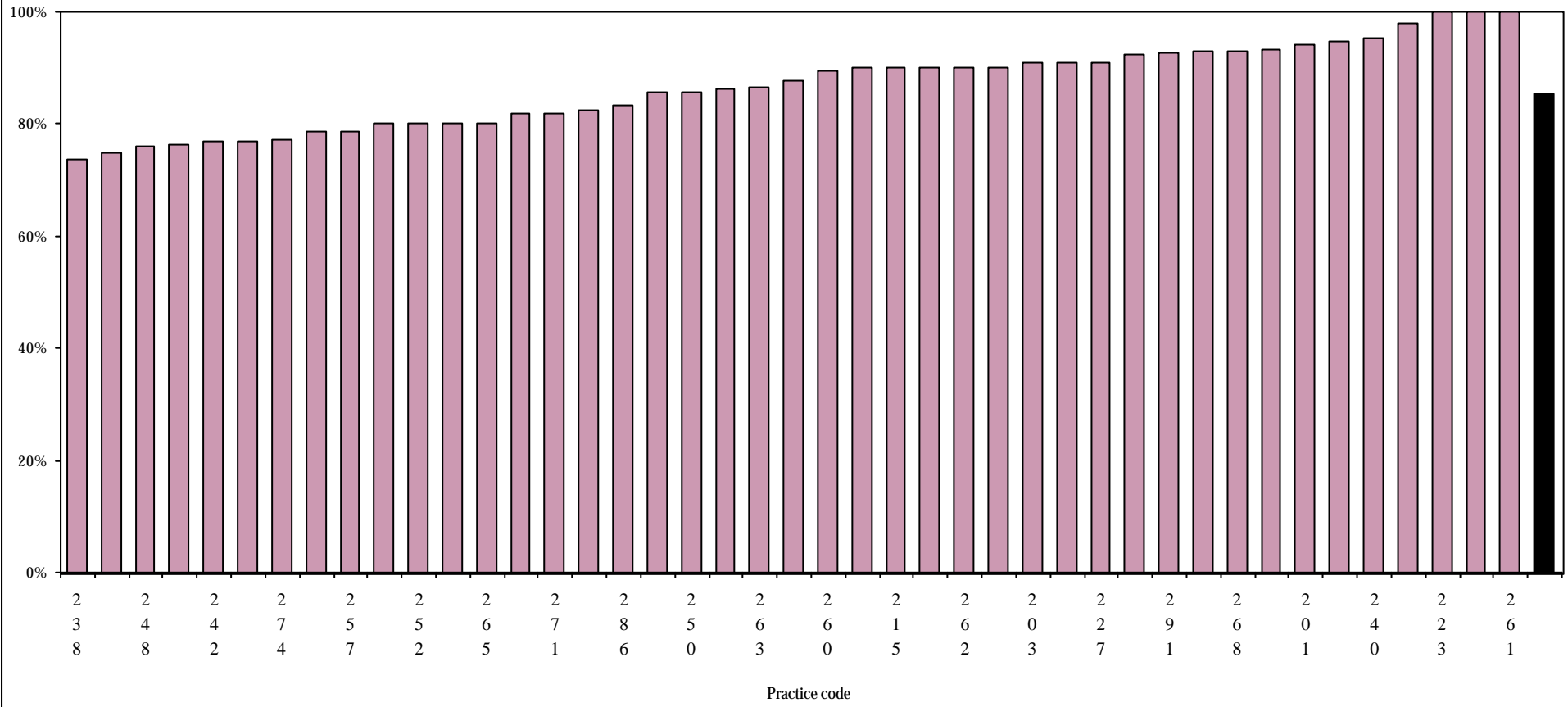
Figure GP3 : Patients with known learning disabilities as a percentage of all patients with schizophrenia



Information on learning disabilities was missing for one in six patients

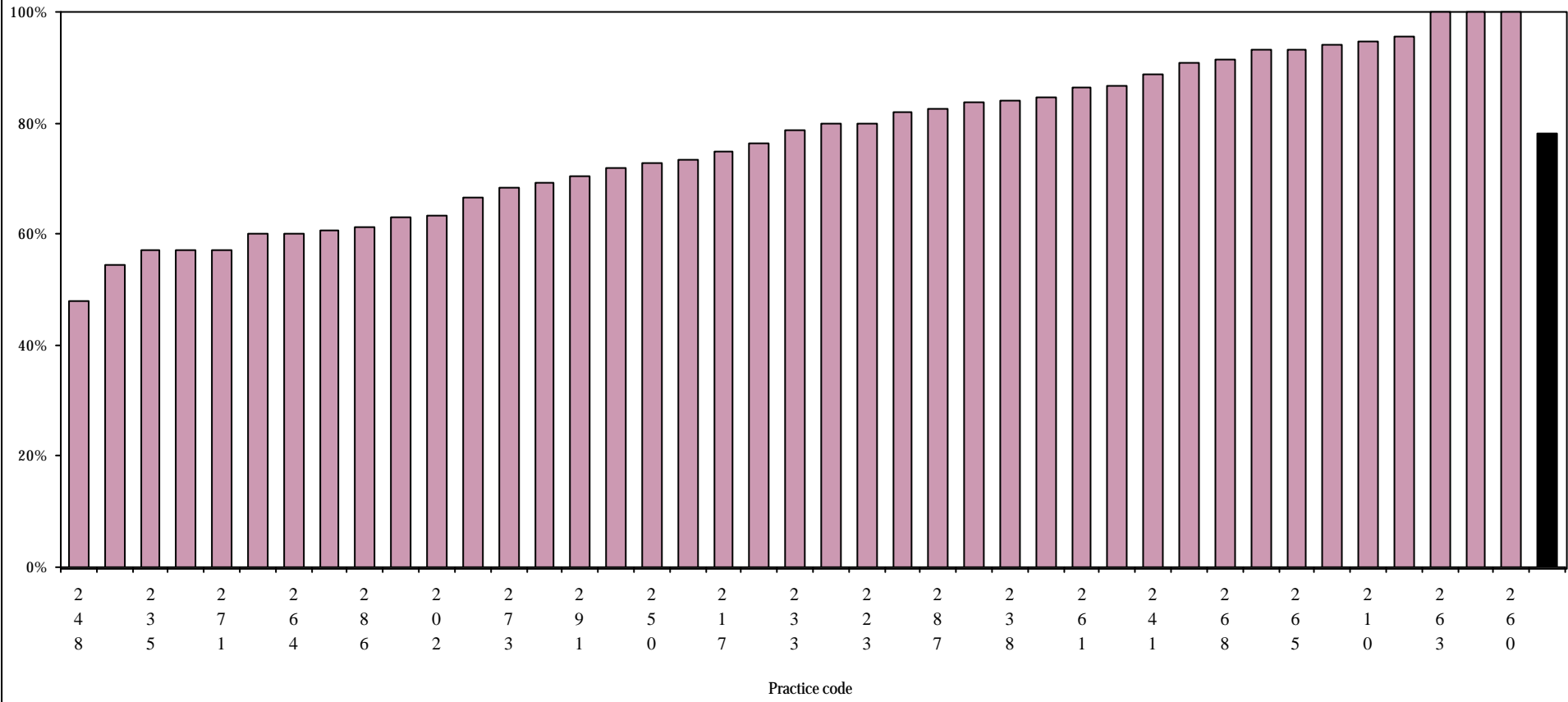
County mean = 86%
n = 1125

**Figure GP4 : Patients seen by a GP in the last 15 months
as a percentage of all patients with schizophrenia**



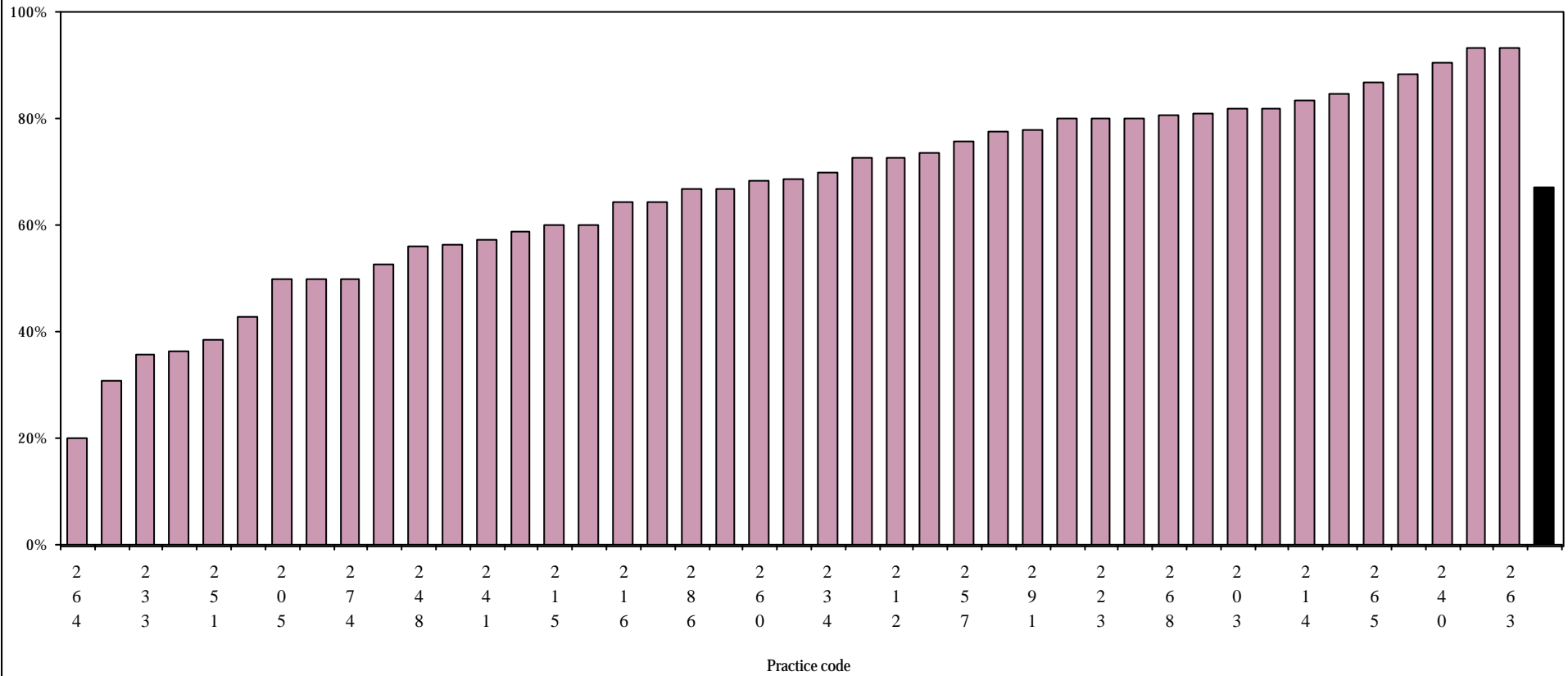
County mean = 78%
n = 1076

Figure GP5 : Patients known to be in contact with the mental health services in the last 15 months as a percentage of all patients with schizophrenia



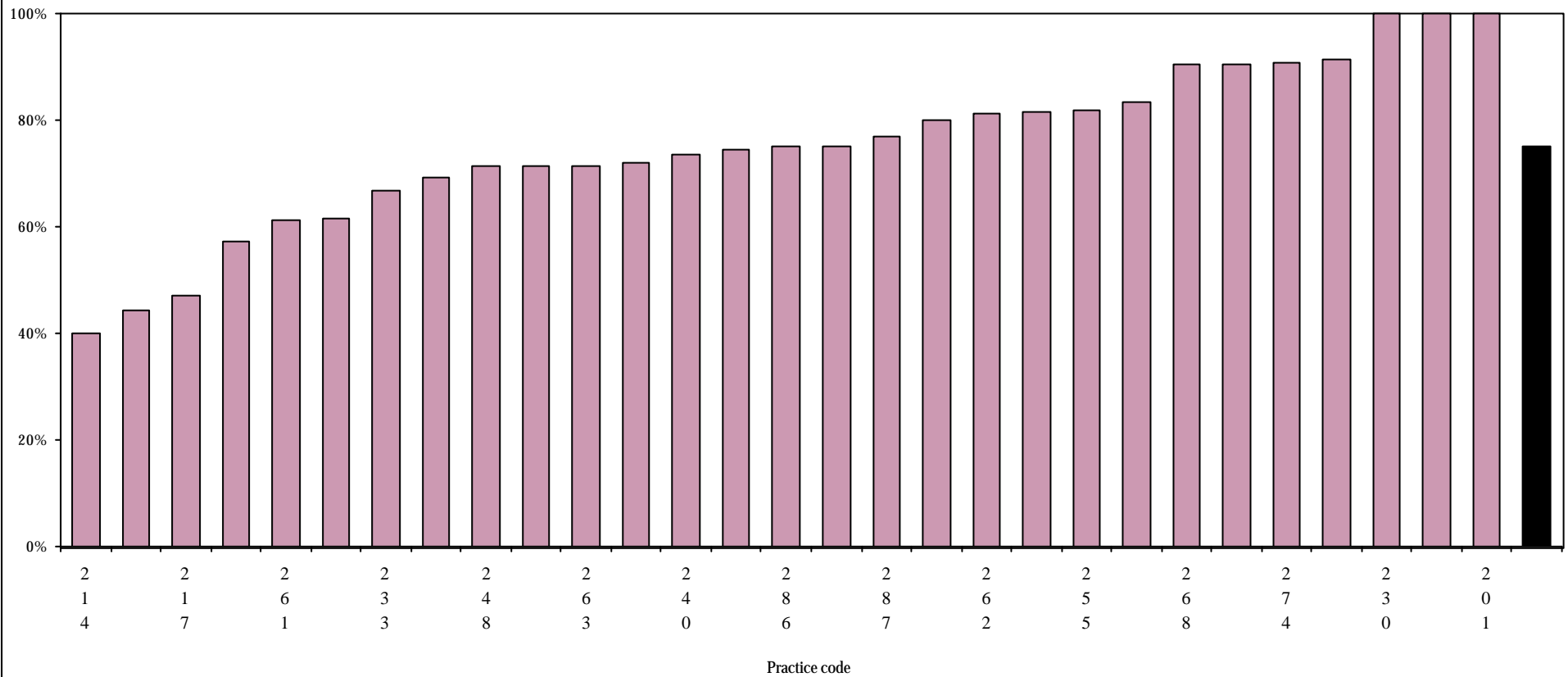
County mean = 67%
n = 1120

Figure GP6 : Patients with blood pressure measured in the previous five years as a percentage of all patients with schizophrenia



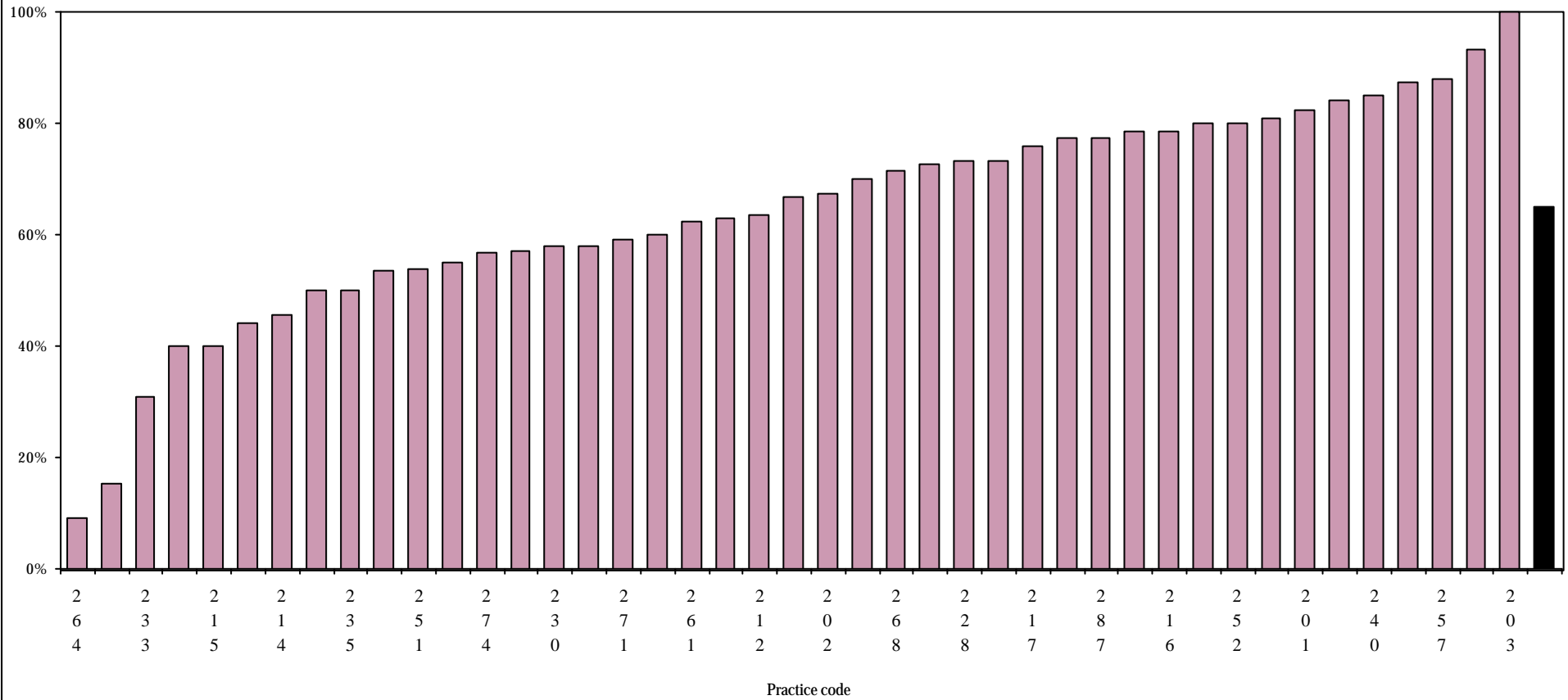
County mean = 75%
n = 743

Figure GP7 : Patients whose most recent blood pressure reading was <140/85 mmHg as a percentage of all patients with schizophrenia who had a BP measurement in the previous 5 years



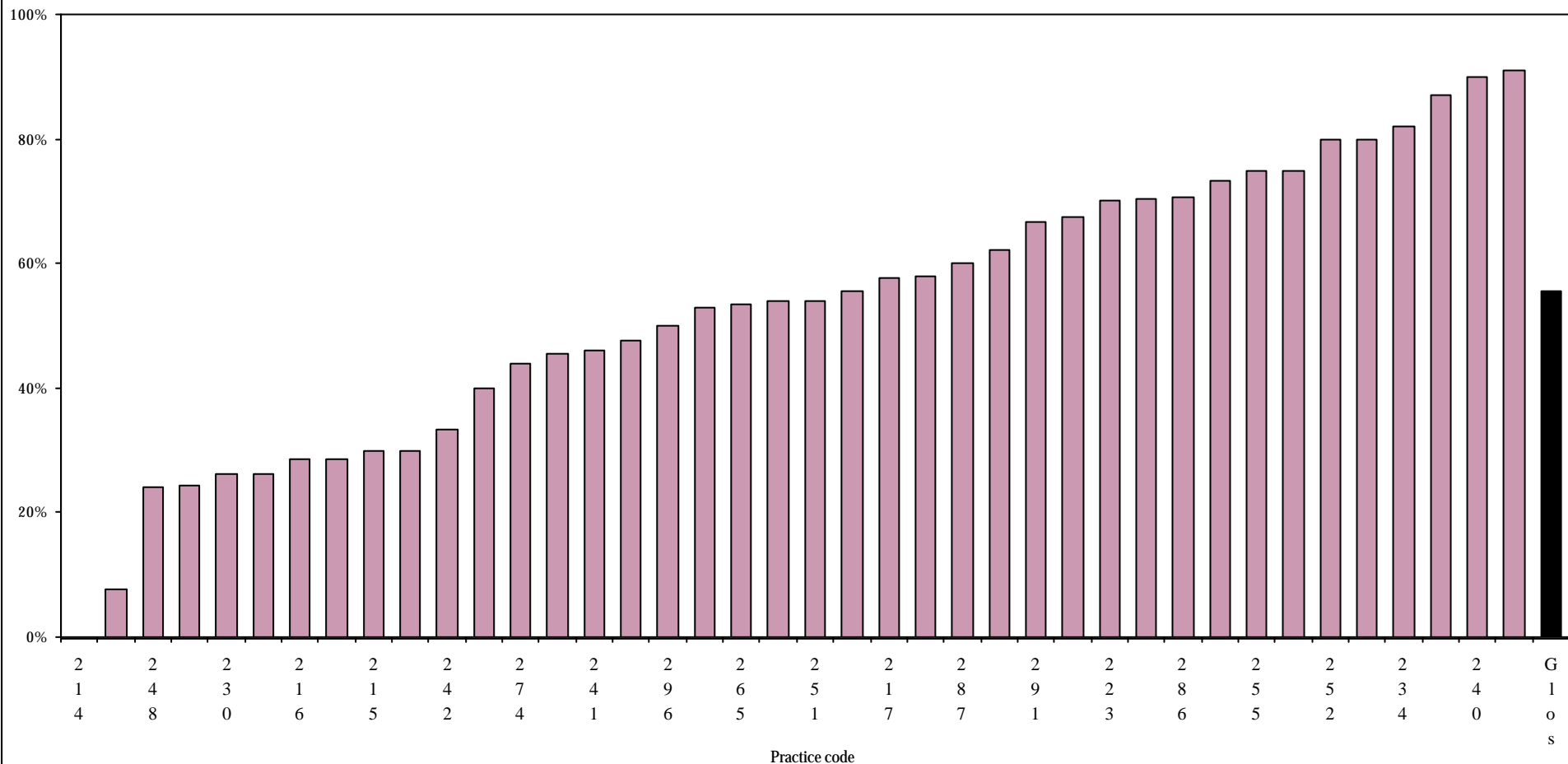
County mean = 65%
n = 1126

**Figure GP8 : Patients with smoking status recorded in the previous five years
as a percentage of all patients with schizophrenia**



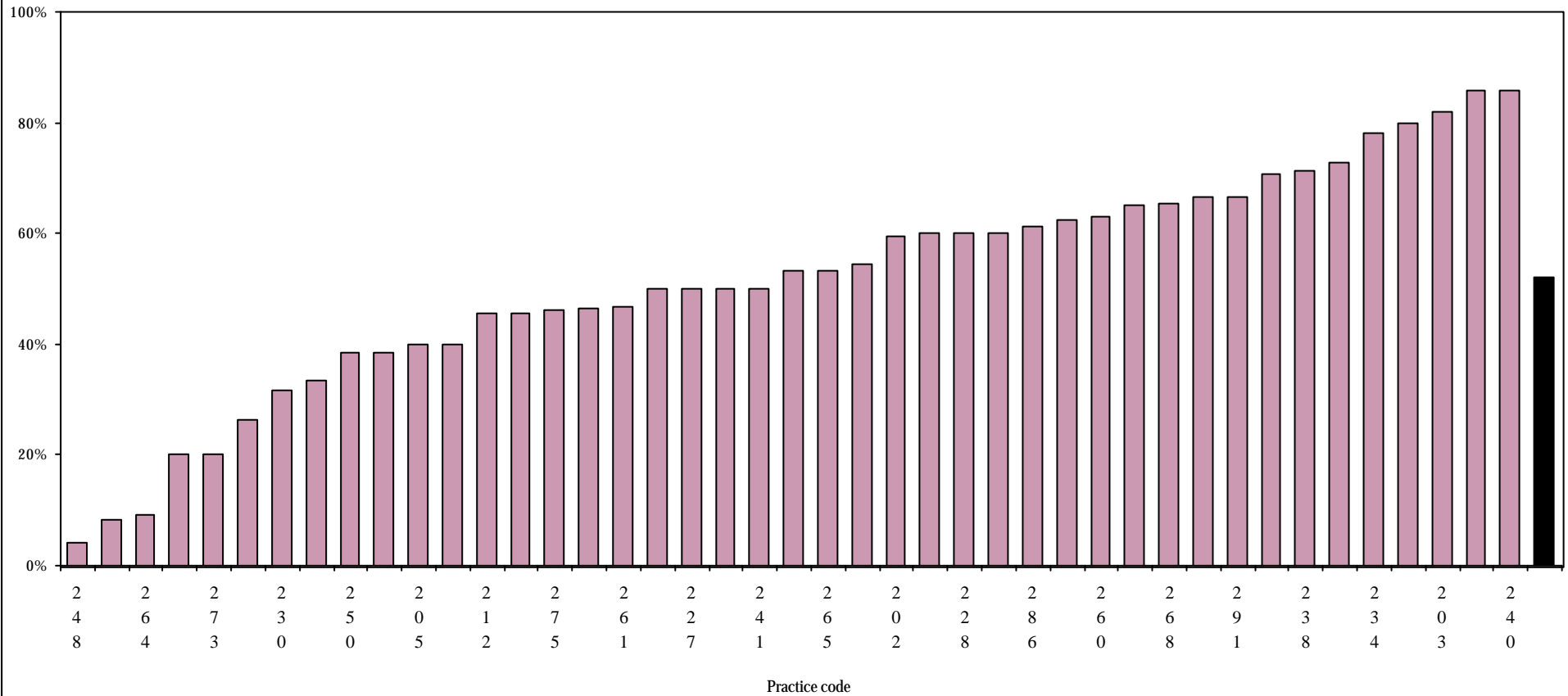
County mean = 56%
n = 1091

**Figure GP10 : Patients with alcohol consumption recorded
in the previous five years as a percentage of all patients with schizophrenia**



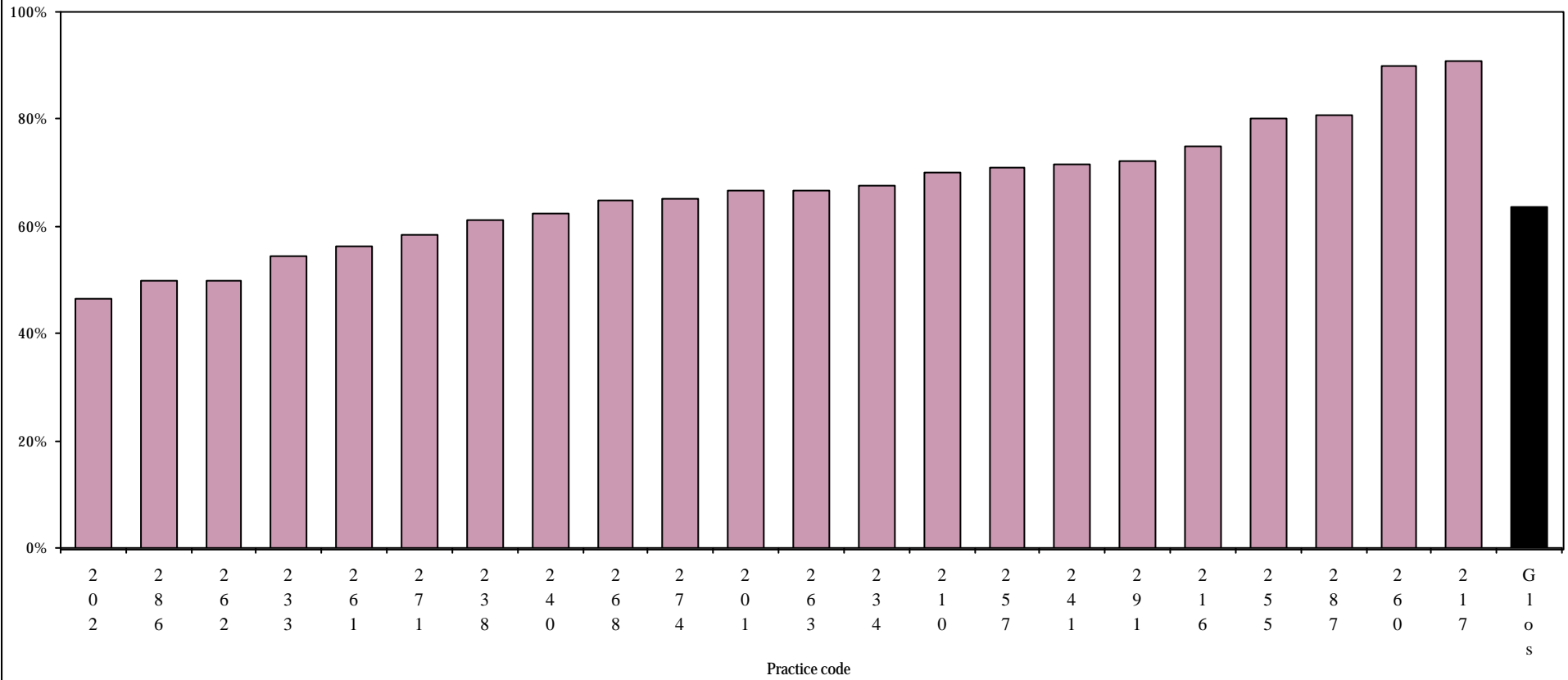
County mean = 52%
n = 1104

**Figure GP11 : Patients with BMI recorded in the previous five years
as a percentage of all patients with schizophrenia**



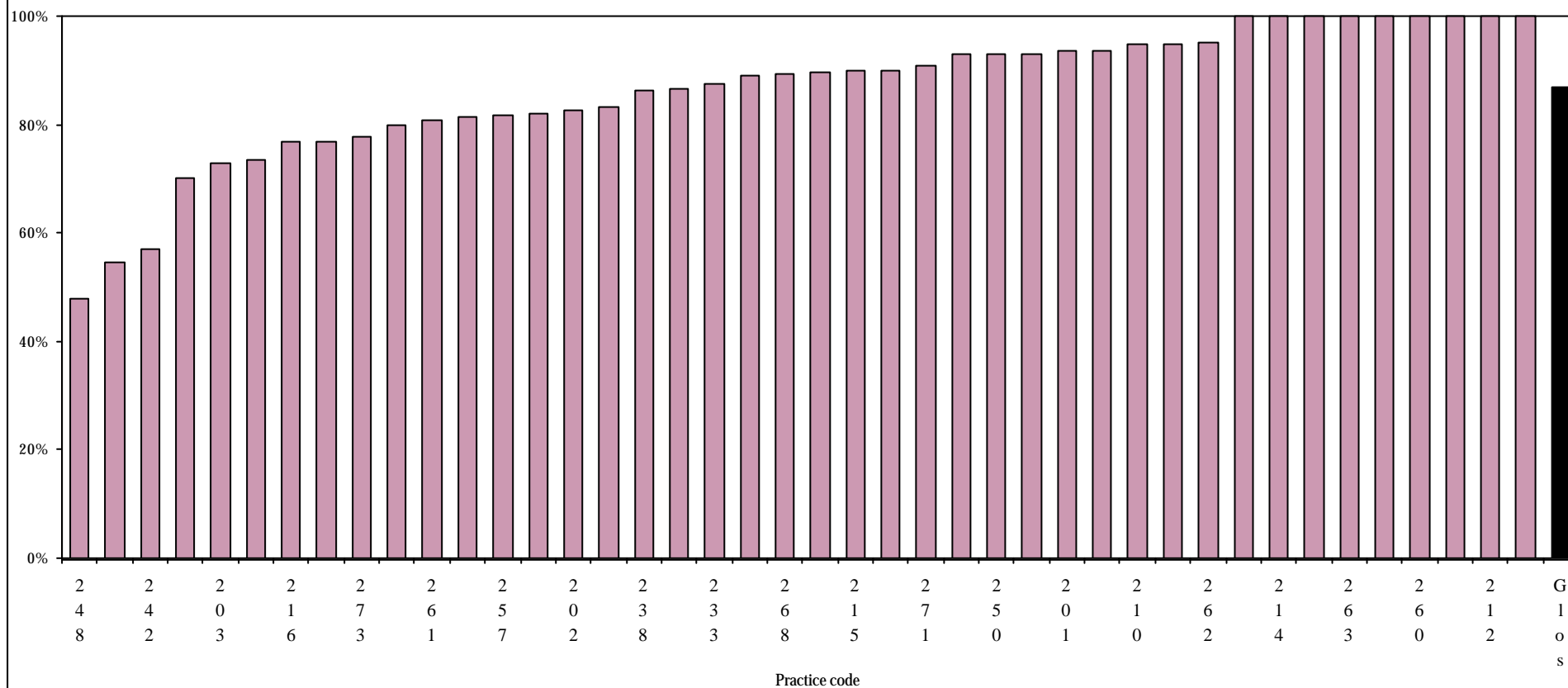
County mean = 64%
n = 557

Figure GP12 : Patients with a BMI of <20 or >25 as a percentage of all patients with schizophrenia who had BMI measured in the last 5 years



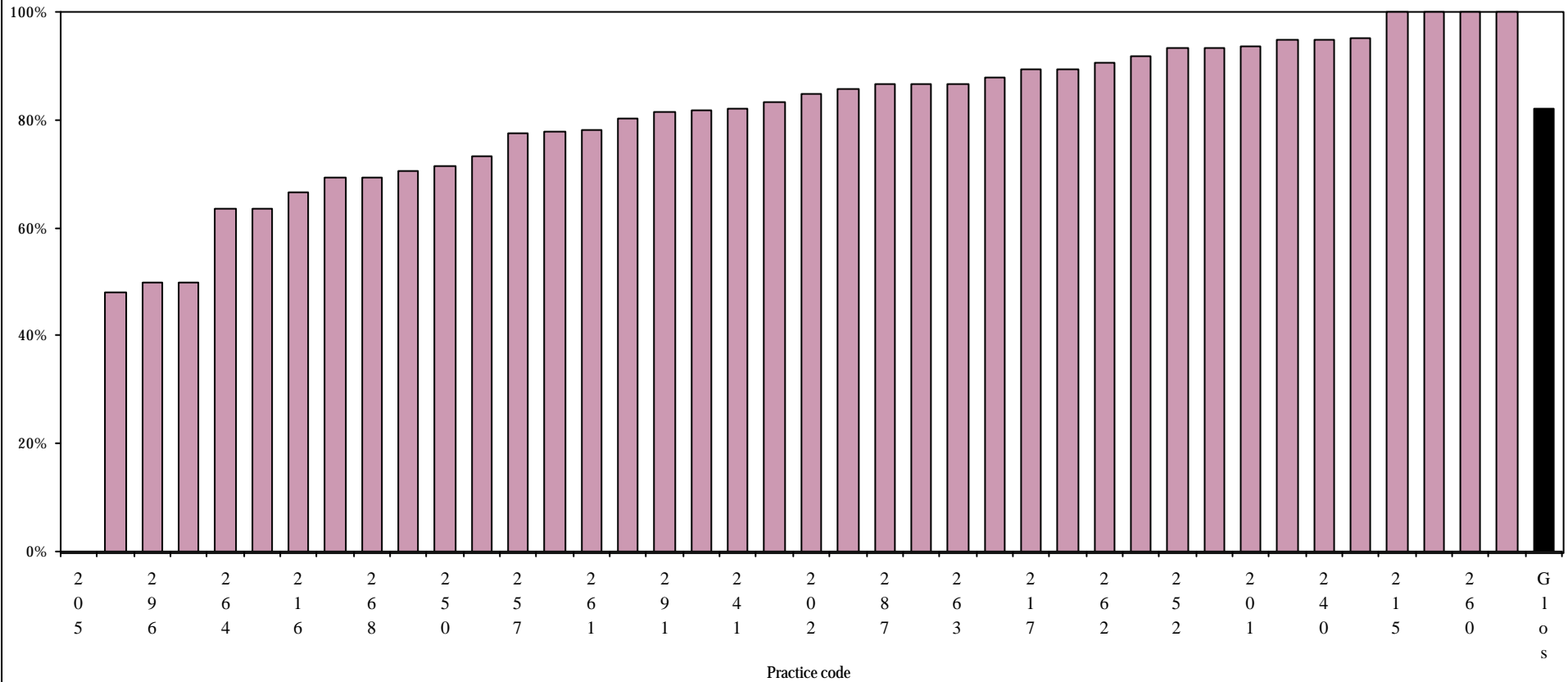
County mean = 87%
n = 1095

Figure GP13 : Patients with assessment of mental state in the previous 15 months as a percentage of all patients with schizophrenia



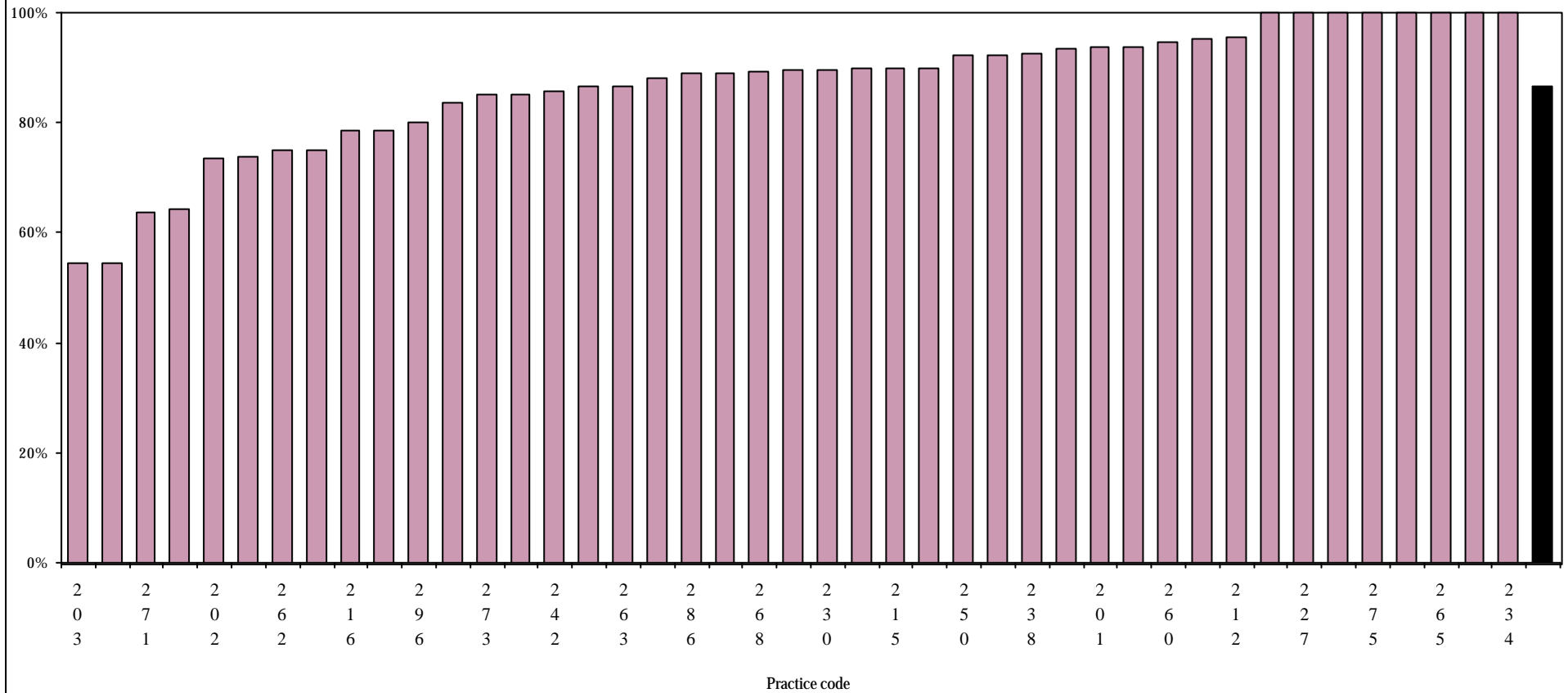
County mean = 82%
n = 1068

Figure GP14 : Patients with assessment of social and/or environmental factors in the previous 15 months as a percentage of all patients with schizophrenia



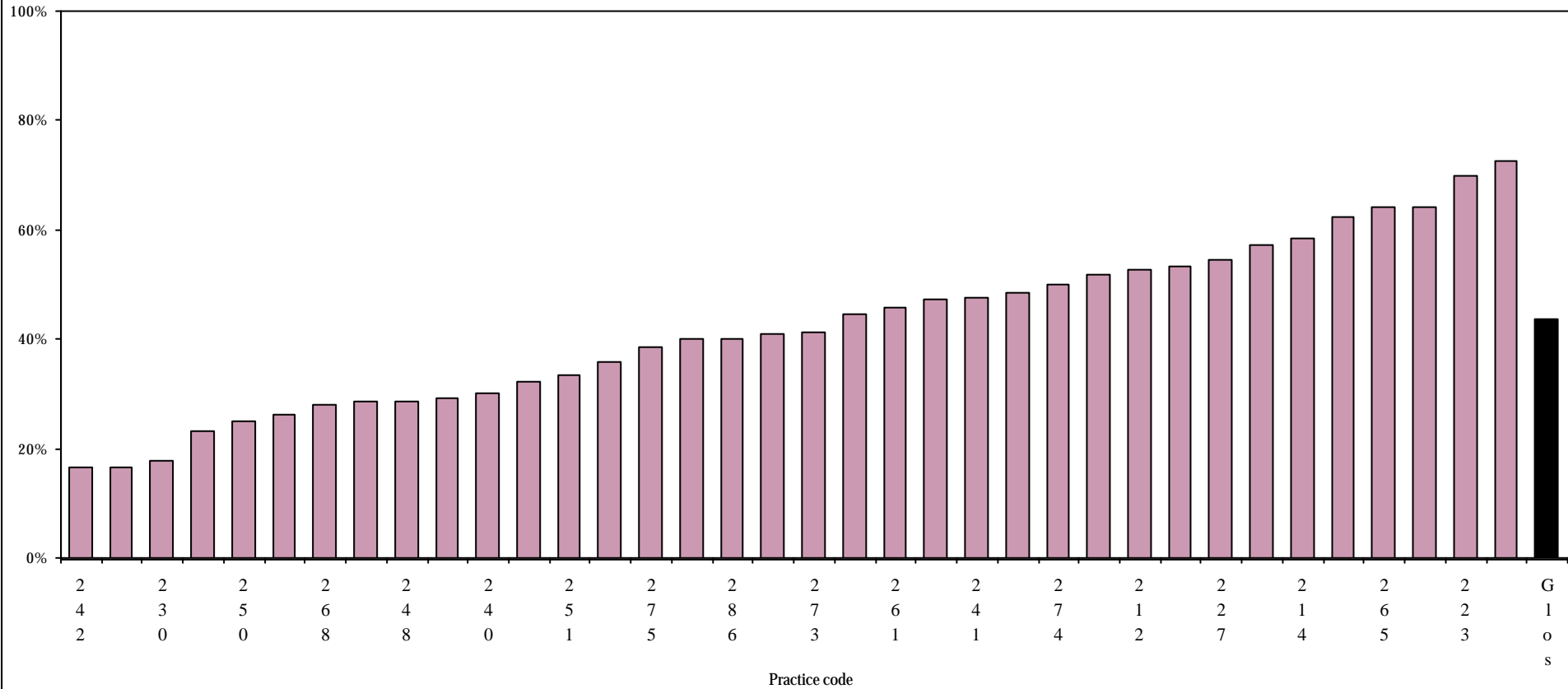
County mean = 87%
n = 1126

Figure GP15 : Patients who are on antipsychotic medication as a percentage of all patients with schizophrenia



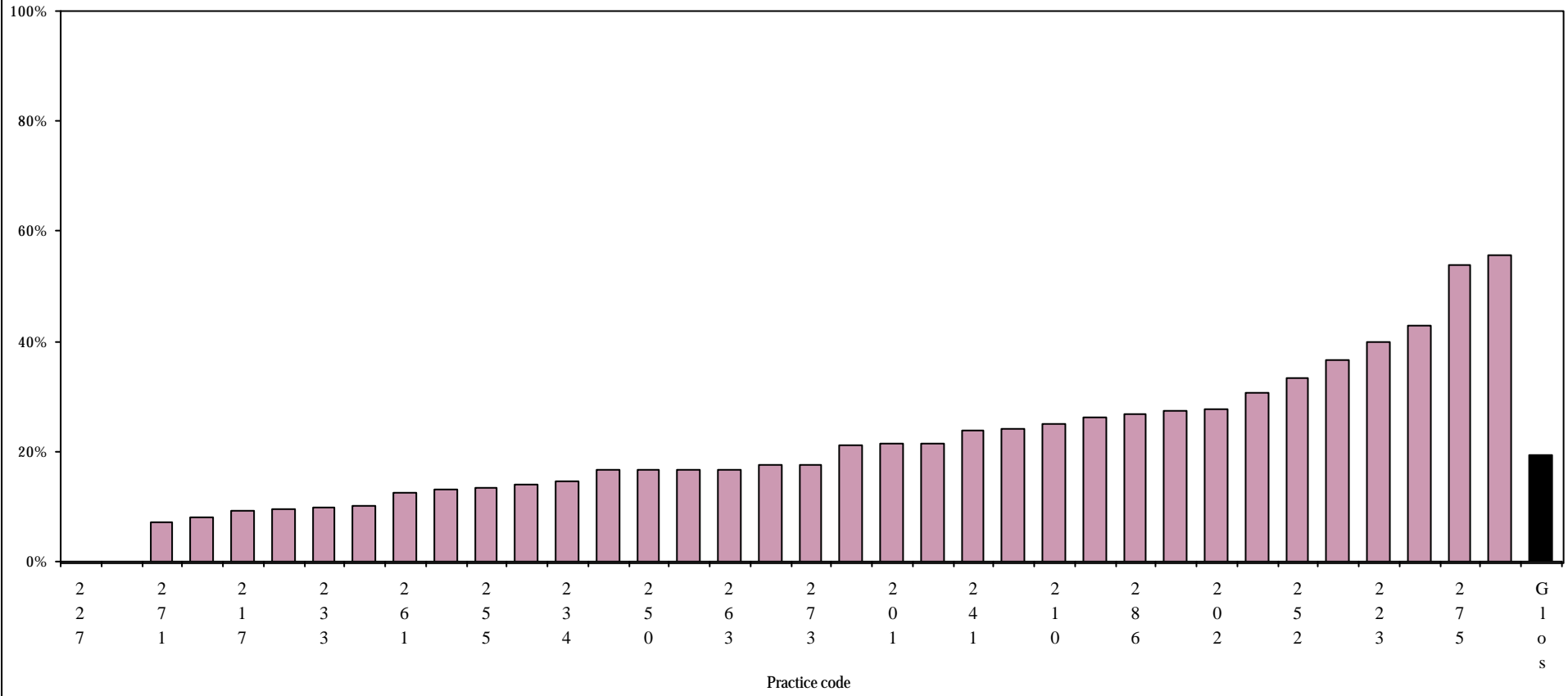
County mean = 44%
n = 952

**Figure GP16 : Patients on novel antipsychotics
as a percentage of all patients on antipsychotic medication**



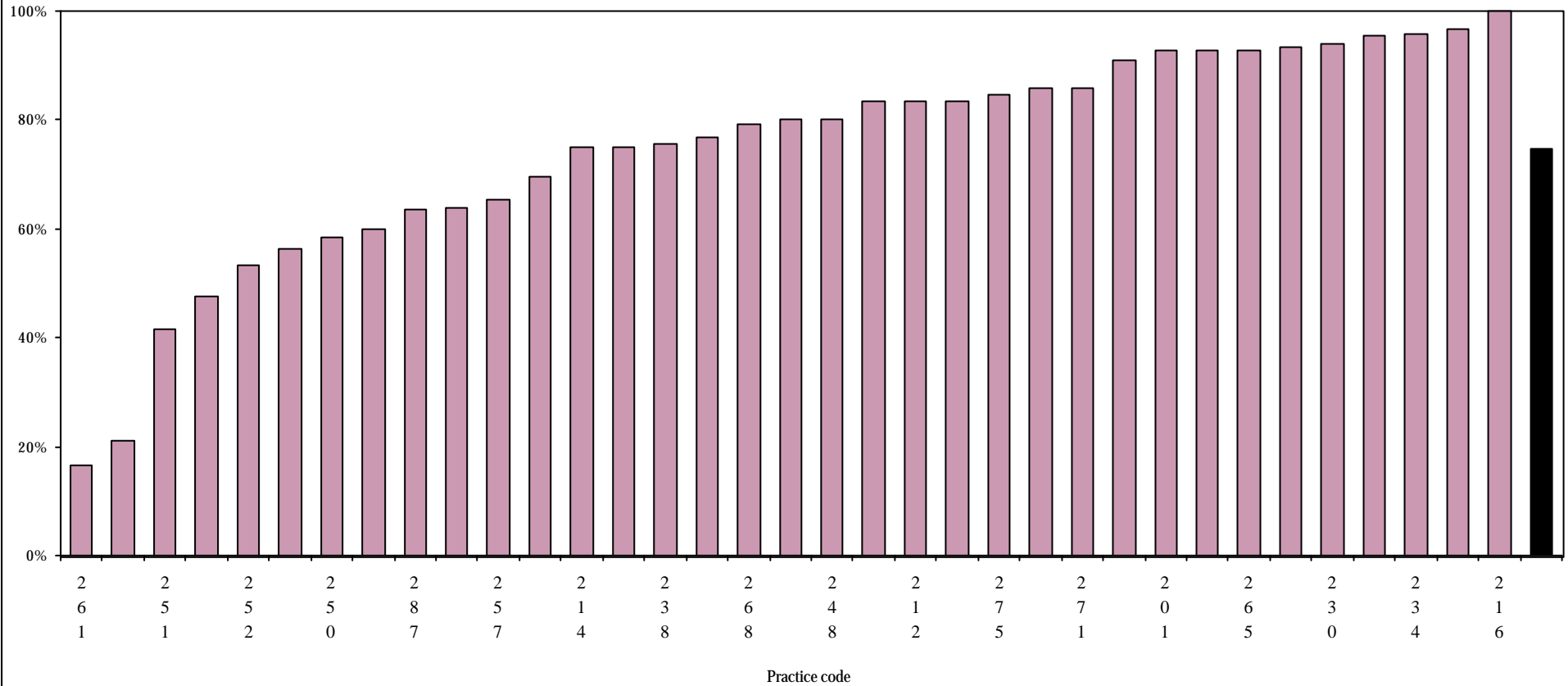
County mean = 19%
n = 952

Figure GP17 : Patients on more than one antipsychotic drug as a percentage of all patients on treatment



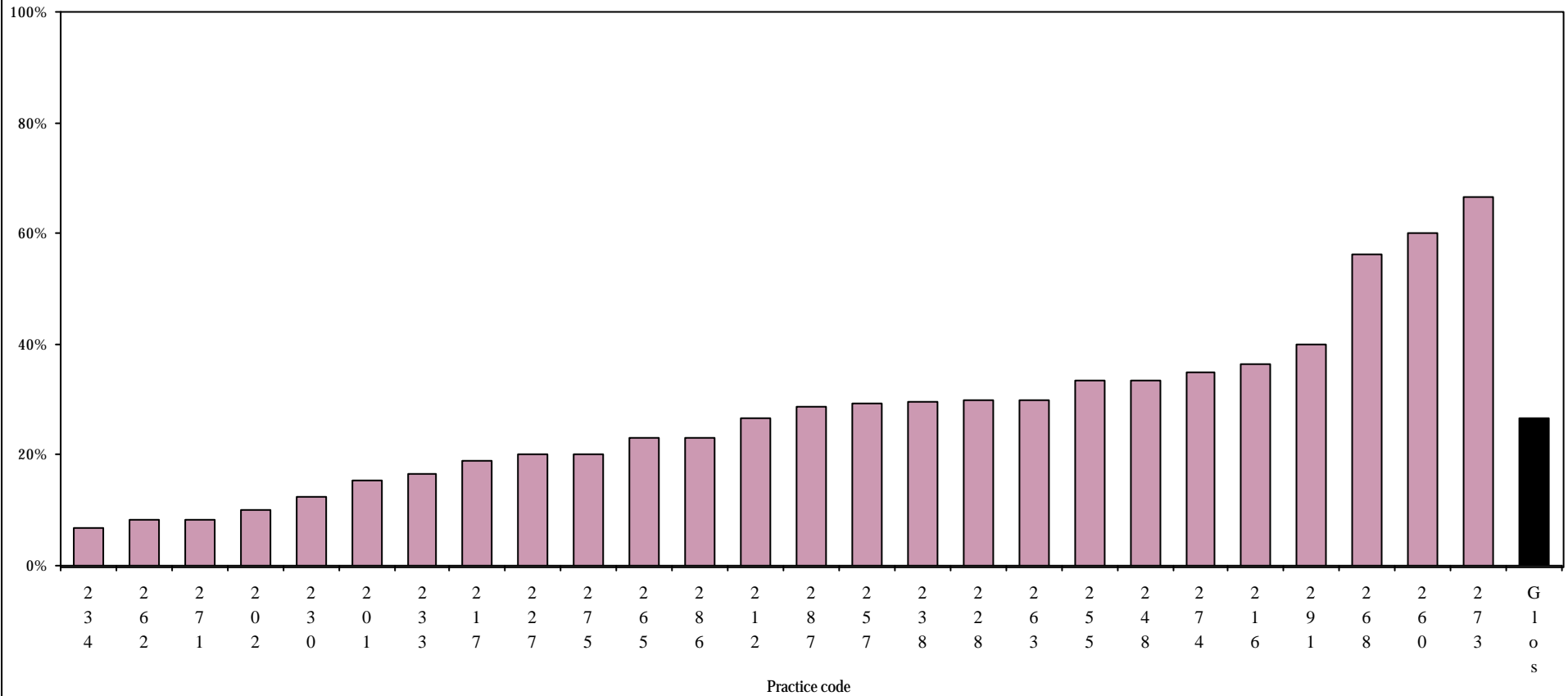
County mean = 75%
n = 924

Figure GP18 : Patients with an assessment of side-effects in the last 15 months as a percentage of all patients with schizophrenia on antipsychotic medication



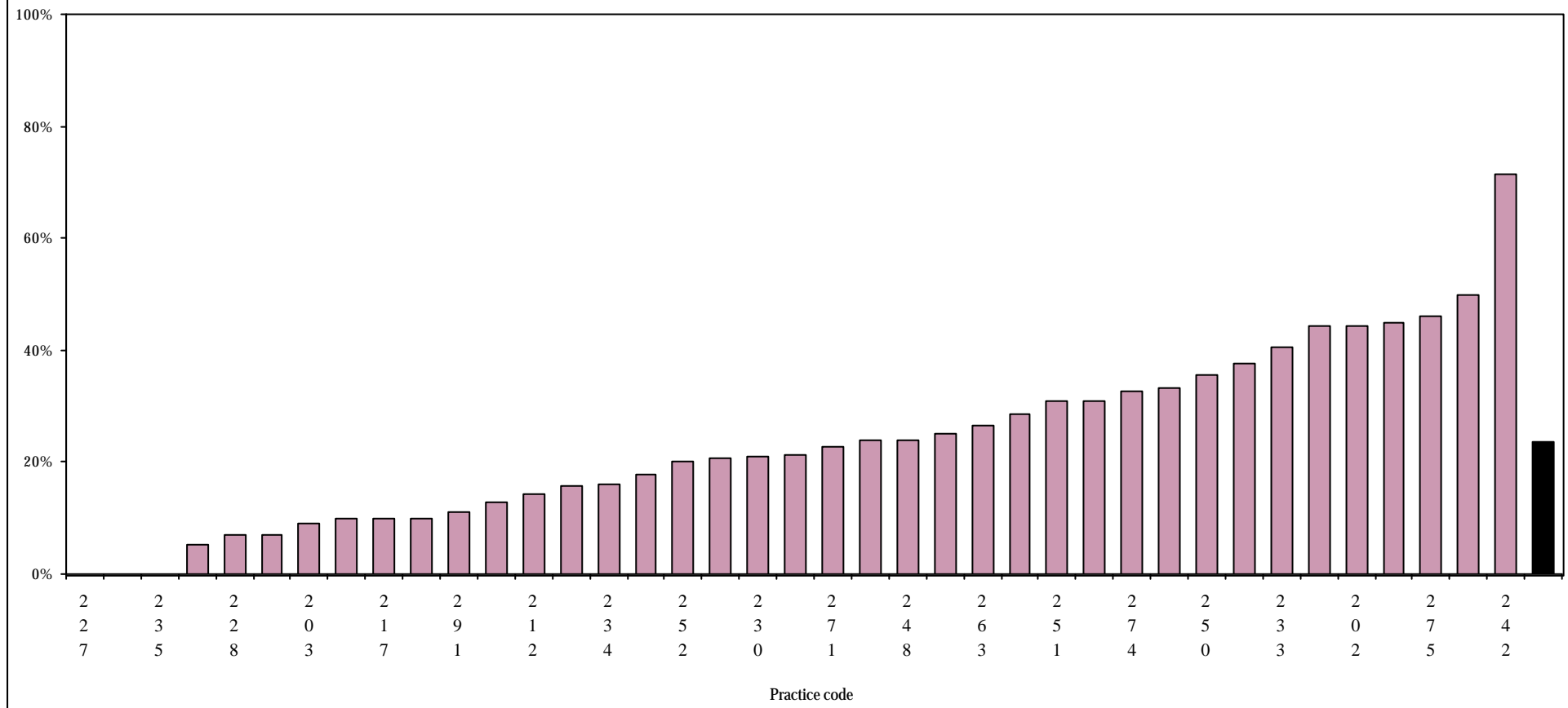
County mean = 27%
n = 666

**Figure GP19 : Patients with side-effects present
as a percentage of those with side-effects assessed in the last 15 months**



County mean = 24%
n = 1110

Figure GP20 : Patients with schizophrenia in whose care the practice did not feel sufficiently involved



2
 2 3 2 0 1 9 1 3 5 3 7 4 6 5 7 5 3 0 7 4
 7 5 8 3 7 1 2 4 2 0 1 8 3 1 4 0 3 2 5 2

Practice code